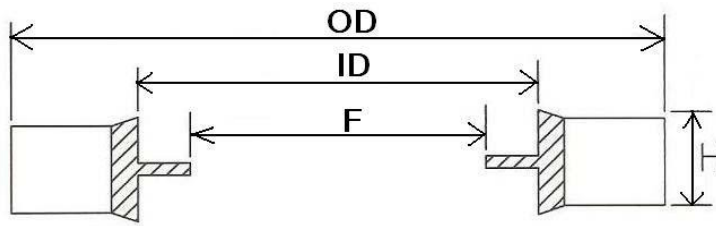
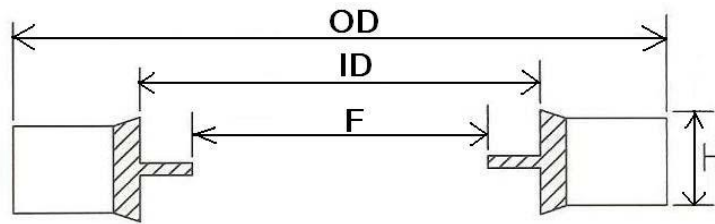


GM500 Self-Centering



THREAD DIA. 'M'	Products Serial number	ID	OD	H	F
		±0.10	+0.13/-0	±0.10	±0.20
M10	#708	10.7	16.08	1.5	8.05
1/8 BSP	#820-A	10.37	15.88	2.0	8.56
	#820-B	10.37	15.88	2.0	8.26
1/4 BSP	#821-A	13.74	20.57	2.0	11.45
	#821-B	13.74	20.57	2.0	11.18
3/8 BSP	#823-A	17.28	23.80	2.0	14.96
	#823-B	17.28	23.80	2.0	14.76
1/2 BSP	#825-A	21.54	28.58	2.5	18.64
	#825-B	21.54	28.58	2.5	18.24
5/8 BSP	#826	23.49	31.75	2.5	20.27
3/4 BSP	#827-A	27.05	34.93	2.5	24.13
	#827-B	27.05	34.93	2.5	23.83
7/8 BSP	#829	30.81	38.10	2.5	27.51
1 BSP	#830-2.5	33.89	42.80	2.5	29.92
	#830-3.2	33.89	42.80	3.2	29.92
1 1/4 BSP	#832-2.5	42.93	52.38	2.5	38.45
	#832-3.2	42.93	52.38	3.2	38.45
1 1/2 BSP	#833-2.5	48.44	58.60	2.5	44.45
	#833-3.2	48.44	58.60	3.2	44.45
1 3/4 BSP	#834	54.89	69.85	3.2	50.42
2 BSP	#836-2.5	60.58	73.03	2.5	56.26
	#836-3.2	60.58	73.03	3.2	56.26
2 1/4 BSP	#838	66.68	79.50	3.2	62.36
2 1/2 BSP	#839	76.08	90.17	3.2	71.5
M6	#865	6.7	11.00	1.0	4.70
M8	#866	8.7	14.00	1.0	6.4
M12	#867	12.7	19.00	1.5	9.73
M14	#868	14.7	22.00	1.5	11.38
5/8	#869	16.51	25.40	2.0	12.9
M16	#870	16.7	24.00	1.5	13.41
11/16	#871	18.16	25.40	2.5	14.5

GM500 Self-Centering



THREAD DIA. 'M'	Products Serial number	ID	OD	H	F
		±0.10	+0.13/-0	±0.10	±0.20
M18	#872	18.7	26.00	1.5	14.76
M20	#873	20.7	28.00	1.5	16.76
M22	#874	22.7	30.00	2.0	18.74
M24	#875	24.7	32.00	2.0	20.11
M5	203+0.35	5.7	9.0	1.0	4.5
M5	204+0.35	5.7	10.0	1.0	4.5
M6	206+0.35	6.7	10.0	1.0	4.7
M6	207+0.35	6.7	11.0	1.0	4.7
M8	212+0.35	8.7	13.0	1.0	6.4
M8	213+0.35	8.7	14.0	1.0	6.4
M10	216+0.35	10.35	15.88	2.0	8.56
M10	217+0.35	10.7	16.0	1.5	8.05
M10	218+0.35	10.7	18.0	1.5	8.05
M12	222+0.35	12.7	18.0	1.5	9.73
M12	223+0.35	12.7	20.0	1.5	9.73
M14	227+0.35	14.7	22.0	1.5	11.38
M16	229+0.35	16.7	24.0	1.5	13.41
M18	232+0.35	18.7	26.0	1.5	14.76
M20	233+0.35	20.7	28.0	1.5	14.76
M22	236+0.35	22.7	30.0	2.0	18.74
M24	238+0.35	24.7	32.0	2.0	20.11
M26	239+0.35	26.7	35.0	2.0	22.3
M27	240+0.35	27.2	36.0	2.0	23.3
M30	242+0.35	31.0	39.0	2.0	25.7
M32		32.7	40.0	2.0	31.8
M33	243+0.35	33.7	42.0	2.0	28.7
M36	245+0.35	36.7	46.0	2.0	31.1
M42	247+0.35	42.7	53.0	2.0	36.5